

SOMERSET
HOUSE

S K A T E

CELEBRATE AT SOMERSET HOUSE

Host your winter celebration at one of London's most spectacular festive settings



Built on historic foundations at the very heart of the capital, Somerset House is home to the UK's largest creative community and one of the city's best loved public spaces.

Run as a charity by Somerset House Trust, all event hire income directly contributes to the venue's cultural public programme, education and outreach work and helps maintain the Grade I listed site for over 3 million visitors to enjoy annually - you can be confident that your event will be directly supporting an organisation offering immense value to an audience that goes far beyond your attendees.

Somerset House is the picture perfect setting for your winter event and our dedicated Commercial Events Team will be on hand to ensure your guests enjoy a celebration like no other.







**SOMERSET
HOUSE**

Thank you SO much for all your help with our event - it was a real success and the staff have given me some incredible feedback on the venue/food & drink/ambience... commenting that this was our best Christmas Party to date... the whole evening was seamless, I can't thank you enough!

- Boston Consulting Group

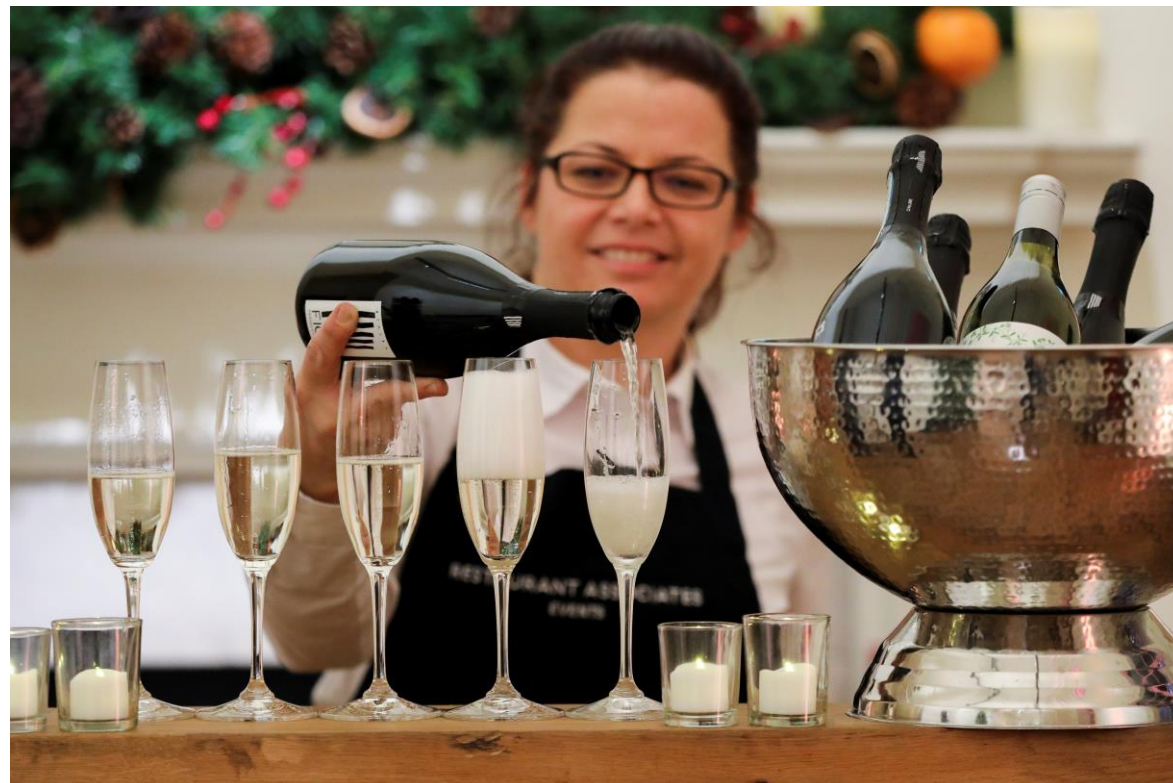
'The whole process was seamless and we loved planning this event. The feedback from everyone was this was our best party yet! We had the best time, the acts we had were incredible and I am so grateful it was all so easy on the night!'

- Hush

'The venue was great, everybody said how they liked that it was in different rooms and not one big room and it was just the right size. The DJ was brilliant and played some great music so all in all everything was perfect. Thank you so much...I will be in touch next year to re-book...'

- Newton Investment Management

EAST WING RECEPTION



Accessed directly from the Edmond J. Safra Fountain Court, with beautiful high ceilings, grand windows and interlinking rooms, there's no better setting for your Christmas party.

Your package (based on a minimum of 100 guests) includes:

- Exclusive hire of the East Wing from 18.00 until 23.00
- Guest arrival from 18.30
- Glass of Prosecco on arrival
- Selection of nibbles
- Canapés (3 per person) and Bowl Food (3 per person)
- Complimentary food tasting of your chosen menu for up to two people
- Unlimited house red and white wine, house beer, soft drinks and mineral water (bar opens at 19.00 and closes 30 minutes prior to guest departure)
- Furniture, bar and festive decoration
- DJ, dance floor, PA system and coloured uplighters
- A hostess to meet and greet guests
- Full event management, dedicated event security and cloakroom facilities provided

100 – 199 Guests : £140 + VAT per person

200 – 350 Guests: £135 + VAT per person

Maximum capacity 350 Guests

Should you wish to extend your event past 23.00, this is an additional cost of £25 + VAT per person, per hour.

CANAPÉS

Please select 3 (as part of the standard package)

- Turkey, sage and chestnut ballotine, cranberry, crispy bacon (gf)(df)
- Slow cooked pork belly, black pudding bon-bon, celeriac purée, spiced apple chutney
- Parma ham, stuffed turkey, sage crumbs, chestnut mousse (+£1 per person)
- Mini fisherman's pie, topped with horseradish mash
- Goats cheese mousse, ratatouille, parmesan shortbread (v)
- Wild mushroom, brie and truffle arancini, shaved parmesan, arrabiata sauce (+£1 per person) (v)
- Polenta and rosemary cake, wild mushroom duxelles, blushed cherry tomato, balsamic (vg)
- Winter roasted vegetable bonbon, caramelised onion, tomato chutney (vg)

Add mince pie canapés for £1.75 per person

Add an additional canapé for £3.50 per person

BOWL FOOD

Please select 3 (as part of the standard package)

- Grilled Lincolnshire sausage, potato purée, caramelised onion, crispy leek (gf)
- Stuffed turkey, caramelised root vegetables, parsnip purée, festive cranberry chutney (gf)
- Slow braised beef cheek, bubble & squeak, red wine jus and onion ring (+£1.50 per person)
- Tandoori salmon, pilaf rice, cucumber raita (gf)(df)
- Crispy seeded and panko cod cheek, parmentier potatoes, tartare sauce
- Butternut squash, chestnut and pine nut risotto, dressed rocket (vg)
- Chilli and coriander falafel, apricot and minted couscous, chickpea tagine (vg)
- Macaroni cheese (v) add hand-dived scallop (+£2 per person) or truffle (+£1 per person)

Add an additional bowl food for £6 per person



Enhance your Event with our Selection of Add-Ons

1. Live Chef stations

£12 per person, per station (choose 3 dishes)

- **Spanish Tapas**
 - Meatball in paprika and olive sauce, basil infusion (gf)(df)
 - Grilled chorizo sausage, salsa Espanola (gf)(df)
 - Patatas bravas (gf)(vg)
 - Chicken and chorizo paella, fresh herb dressing (gf)(df)
- **Mexican Tacos**
 - BBQ pulled pork taco, chimichurri (df)
 - Shredded chicken taco (df)
 - Jack fruit and salsa roja (vg)(df)
 - Crispy breaded fish taco
 - All tacos served with salsa, guacamole and sour cream
- **Chow Patty Counter (vg)**
 - Samosa Chat Blast
 - Bhel puri chat
 - Papdi aloo chat
 - Bhaji masala chat
- **Dessert Counter**
 - Lemon meringue pie
 - Christmas chocolate Yule log
 - Winter wonderland mini tree cupcake
 - Christmas pudding strudel and almond crème (vg)

2. Panettone Station

£5.95 per person

Served with dark chocolate, crème anglaise, Baileys original Irish cream sauce
Accompanied with dessert wine for +£2.10 per person

3. Cheese and Charcuterie Station

£10.20 per person

Selection of fine cheese and meat served on platters
Accompanied by a variety of crackers and preserves

4. Late Night Snacks

£5.55 per person

Selection of Sliders;

- Fish butty tartare sauce
- House blend burger, mustard mayo
- Portobello mushroom burger, garlic aioli (vg)

5. Festive Drinks

Upgrade from Prosecco to Champagne on arrival £5.50 per person

Enjoy Prosecco all night, £14.40 per person

Enjoy Champagne all night, £29 per person

Mulled Wine or Cider, Winter Pimm's, £7.80 per item

Winter Negroni or Tiramisu Martini, £8.30 per item

Baileys Hot Chocolate Bar, £7.80 per item

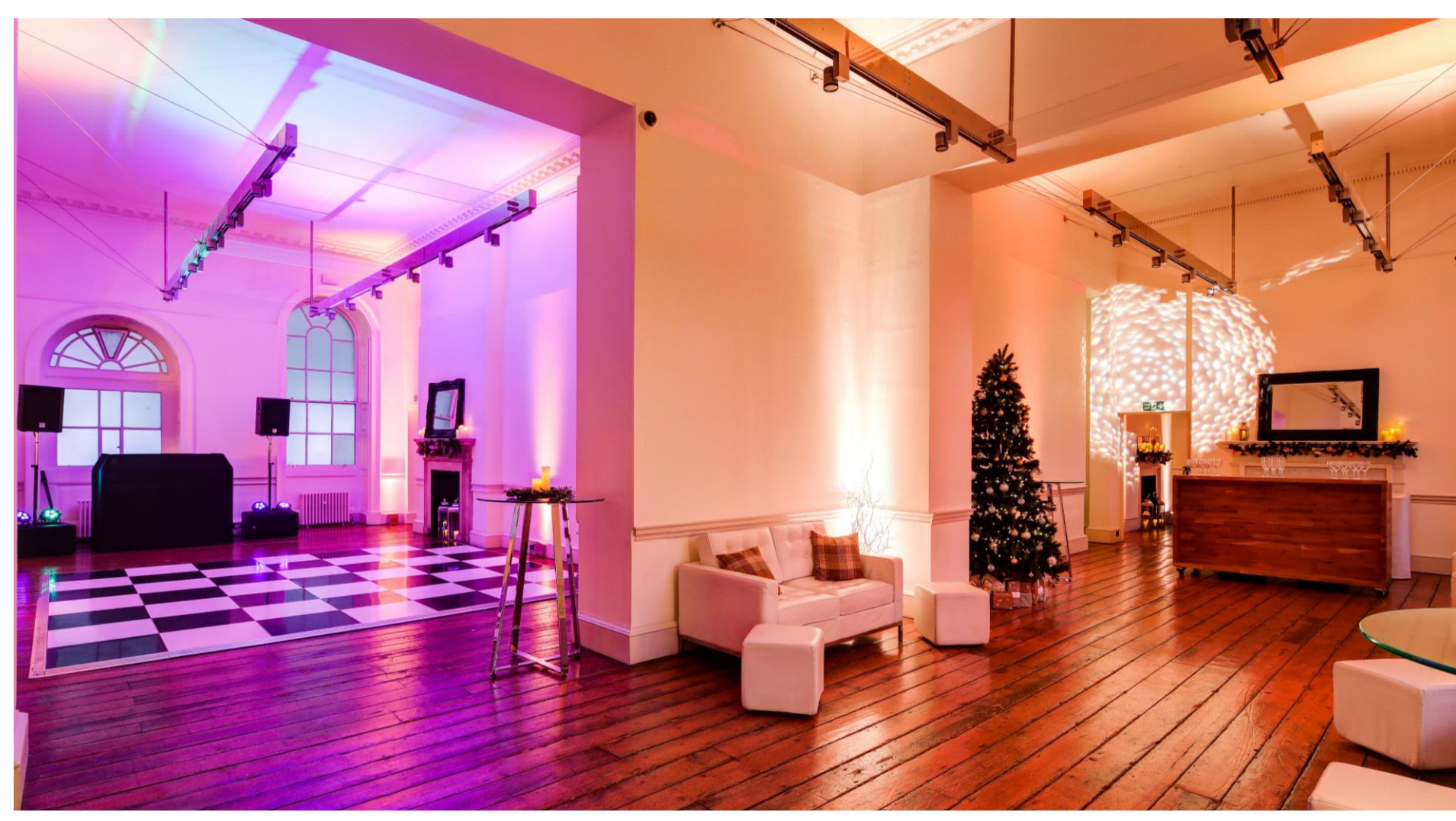
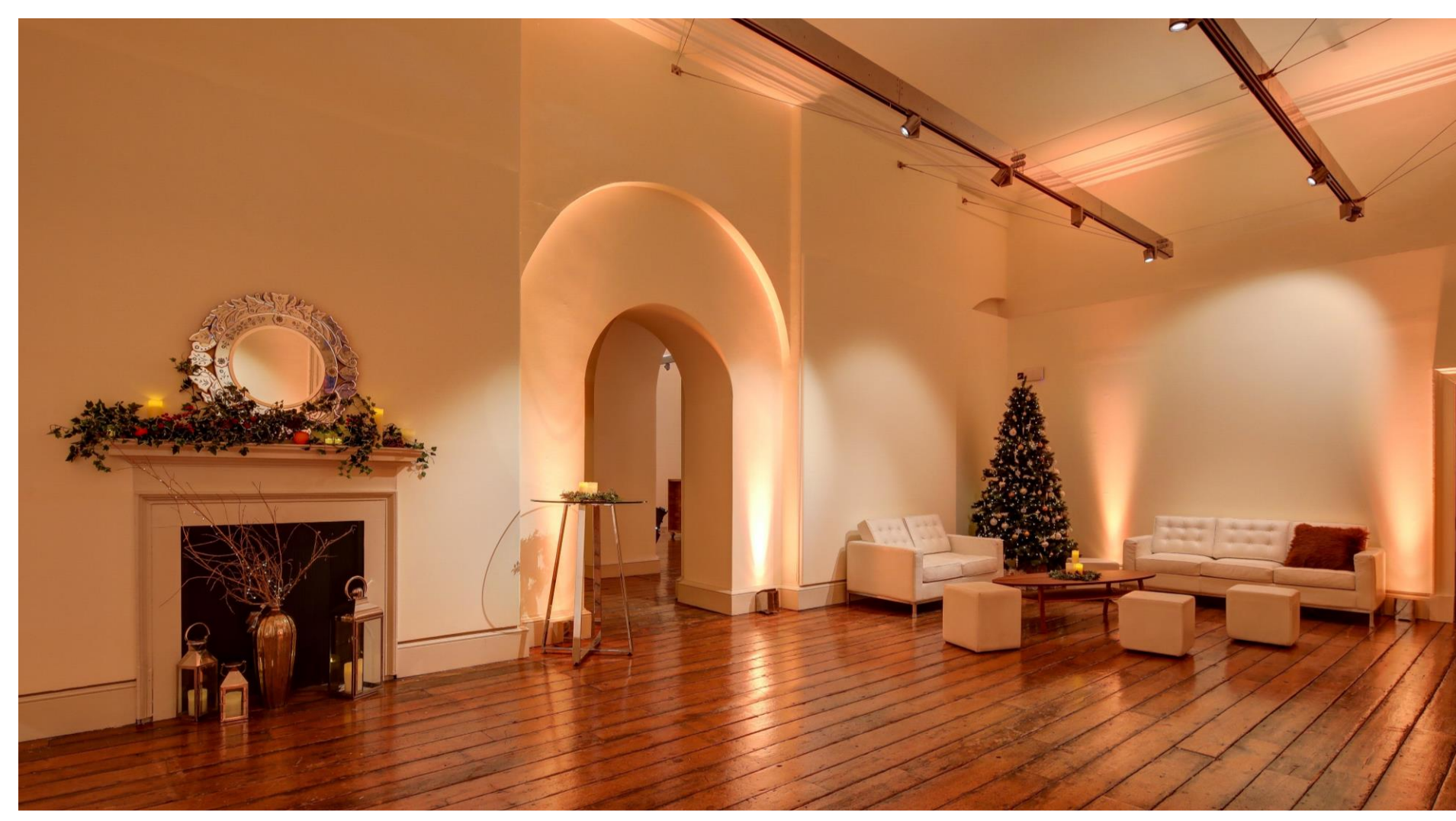
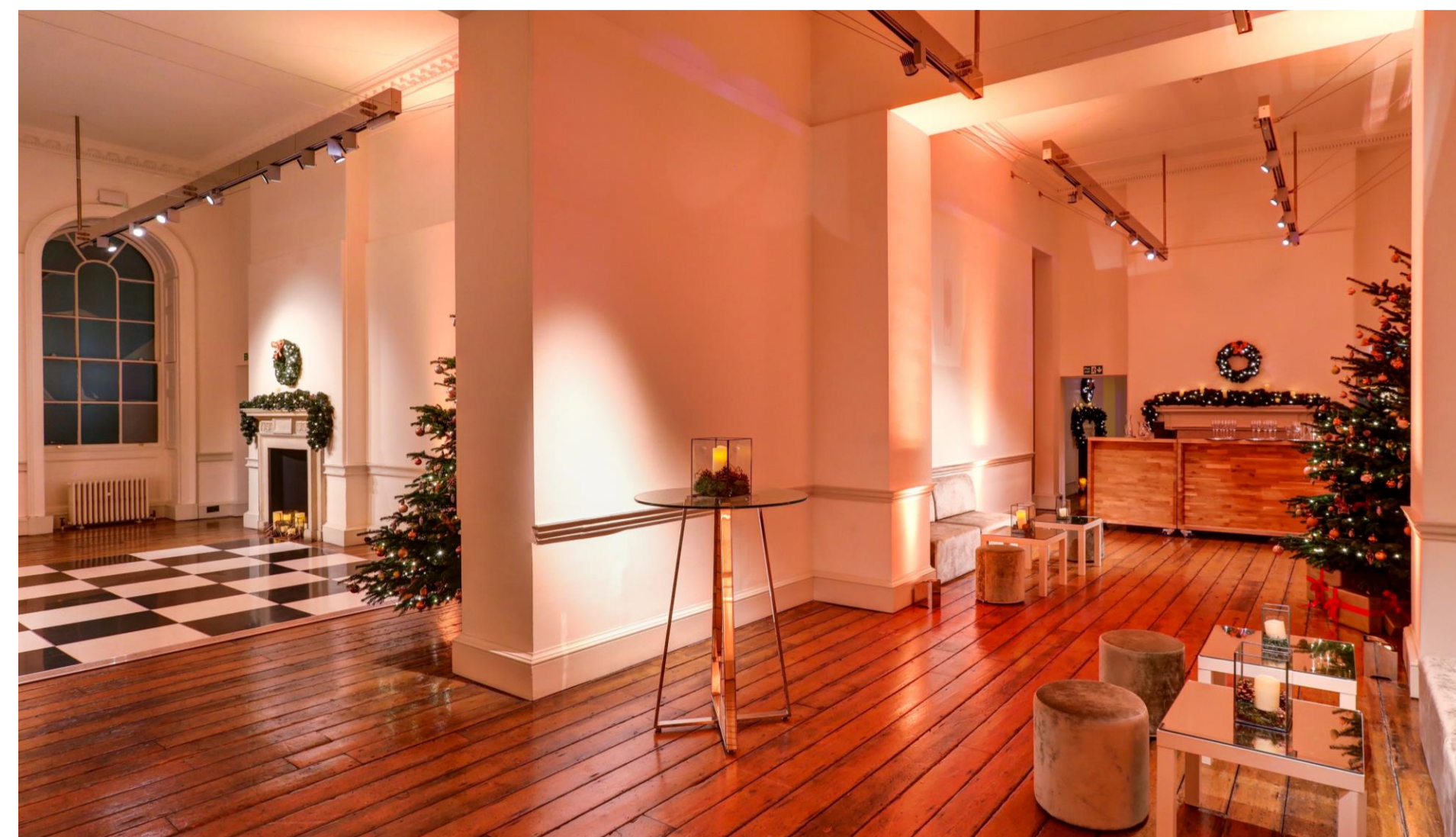
Original Irish cream, salted caramel, Chocolate Luxe and Almande
Top with whipped cream, mini marshmallows and sprinkles

Spirits Package, From £9 per person, per hour

Cocktail Bar, From £23.95 per person

Includes additional bar with staff, 2 x bespoke cocktail options and a non-alcoholic option. Based on 2 x drinks per person. Add flair or dry ice for that wow factor!





ENHANCE YOUR EVENT



Our cultural programme is ever changing, offering opportunities to enhance your event and provide guests with an unforgettable experience at Somerset House.

SKATE AT SOMERSET HOUSE

Option 1 – Add Tickets (Non-Exclusive)

- Book group sessions for up to 80 guests skating at the same time.
- £18+ VAT (per person, per session).
- Each session is 45 minutes.

Option 2 – Book an Exclusive Session

- £6,000 + VAT for one 45 minute session.
- Available for up to 220 guests (minimum of 120 guests required).

BEHIND THE SCENES TOURS

Whether it's a film location or historical tour, you can enrich your guests' experience by taking them on a journey through Somerset House.

PRIVATE VIEWS

Combine your event with exclusive access to one of our exhibitions. Available outside exhibition opening hours.

GUEST TICKETS

Surprise your guests with tickets to an exhibition or live event alongside your event. Available during exhibition opening hours.

Options are only available in association with a venue hire and are subject to availability. More seasonal options still to be announced, please get in touch with the team to find out more.

OUR LOCATION

Somerset House
Strand, London WC2R 1LA

BY LONDON UNDERGROUND

Nearest stations

Temple (Circle & District lines; 250m, 5 mins)

Covent Garden (Piccadilly line; 650m, 8 mins)

Charing Cross (Bakerloo & Northern lines; 700m, 10 mins)

Embankment (Circle & District lines; 700m, 10 mins)

Waterloo (Bakerloo, Waterloo & City, Jubilee & Northern lines; 800m, 11 mins)

BY RAIL

Nearest stations

Charing Cross (700m, 10 mins)

Blackfriars (1km, 13 mins)

Waterloo (1km, 13 mins)

BY RIVER

River bus services RB1, RB2 and RB6 all stop at Embankment Pier, roughly 600 metres from Somerset House

